

ManOverBoard CF4 Light-Smoke-Signal

Issue: Rev. 02_01.2019



HIGHLIGHTS

- ✓ Unique 360° LED light ring for all-around visibility!
- ✓ Light-weight and ultra-compact!
- ✓ Premium bracket system for easy mounting and handling, covering most common hole patterns!



approved



0589

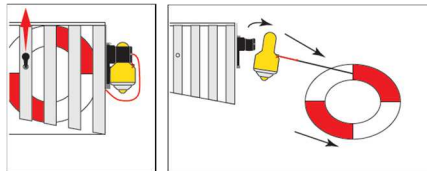
approved

APPLICATION

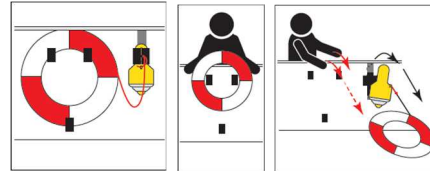
The ManOverBoard CF4 is designed to provide persons in distress at sea an exact position marking by day and night and also indicates wind direction. The signal can be automatically deployed by releasing the attached lifebuoy.

OPERATION

1. Automatic deployment with lifebuoy-slide by releasing lifebuoy



2. Manual deployment by throwing MOB CF4 and the lifebuoy overboard



SPECIFICATIONS

Length: 325 mm
 Diameter: 175 mm
 Base diameter: 85 mm
 Weight: 2.750 g
 NEC: 1.000 g

Ignition: Self-activating
 Smoke duration: Min. 15 minutes
 Smoke colour: Orange

Light duration: > 2 h
 Light output: > 2 cd

PACKING

Packing unit: 2 pcs. In 1 fiberboard box (4G)
 Measurements: 400 x 200 x 400 mm

Gross weight: 9,000 kg
 Net weight: 8,000 kg
 NEC: 2,000 kg

DANGEROUS GOODS INFORMATION

Hazard Class: 1.4S
 UN number: 0507

Shipping name: SIGNALS, SMOKE
 Other: Passenger & Cargo Aircraft

- All shown data are approximately / Subject to modification without prior notice -